

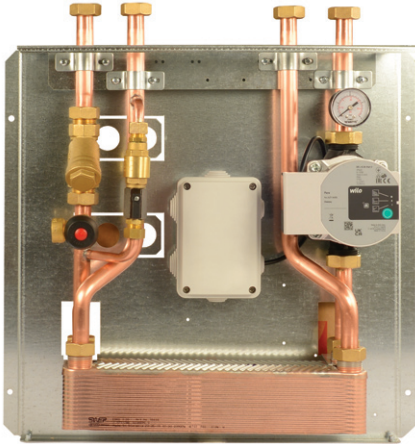
Sep Kit

Hydraulic separation unit

DESCRIPTION

Sep Kit hydraulically separates the generator from the heating system by means of a plate heat exchanger to keep the primary circuit clean. Sep Kit is suitable for heating systems with heat pump or boiler generator (gas or solid fuel).

SEP KIT

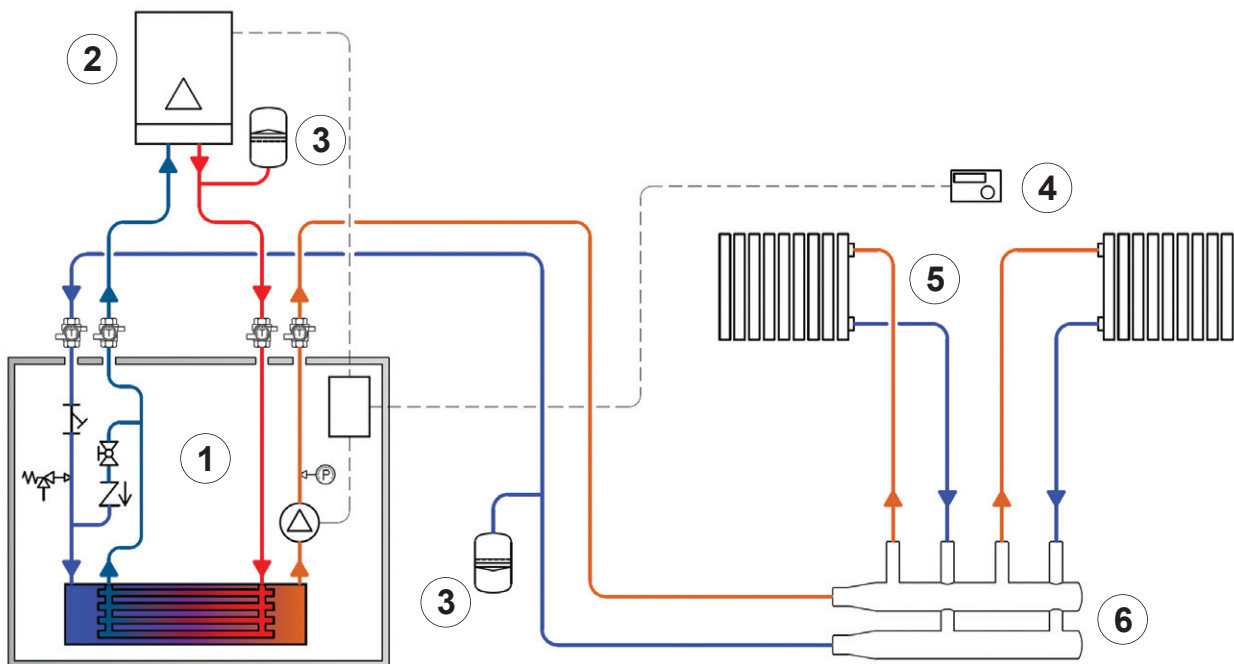


COVER SHELL



- Hydraulic separation
- Nominal heat exchanger capacity 14 kW - PDC
- Nominal heat exchanger capacity 26 kW - boiler
- Wall hanging installation
- Control unit (optional)
- Cover shell (optional)

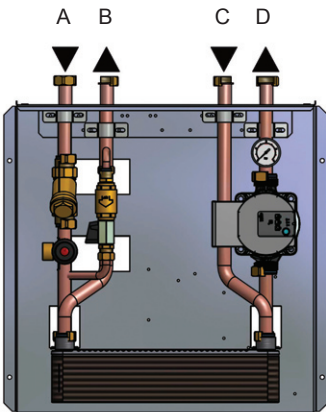
EXAMPLE OF USE



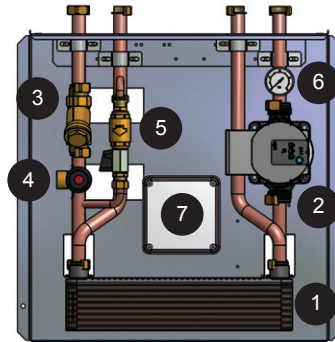
1. SEP KIT WITH CONTROL UNIT (OPTIONAL)
2. GENERATOR
3. EXPANSION VESSEL
4. ROOM THERMOSTAT
5. HEATING SYSTEM
6. DISTRIBUTION MANIFOLD

Sep Kit

COMPONENTS AND FLOWS



Hydraulic connections G3/4" with loose nut

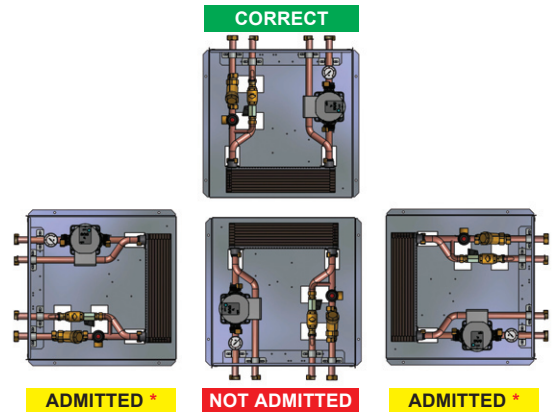


- 1 : Plate heat exchanger
- 2 : System pump
- 3 : Y-strainer
- 4 : 4 bar safety valve
- 5 : Filling group *
- 6 : Pressure gauge
- 7 : Control unit (optional)

* The filling of the secondary circuit (system) is made directly from the primary circuit (generator) by means of manual valve and check valve

INSTALLATION

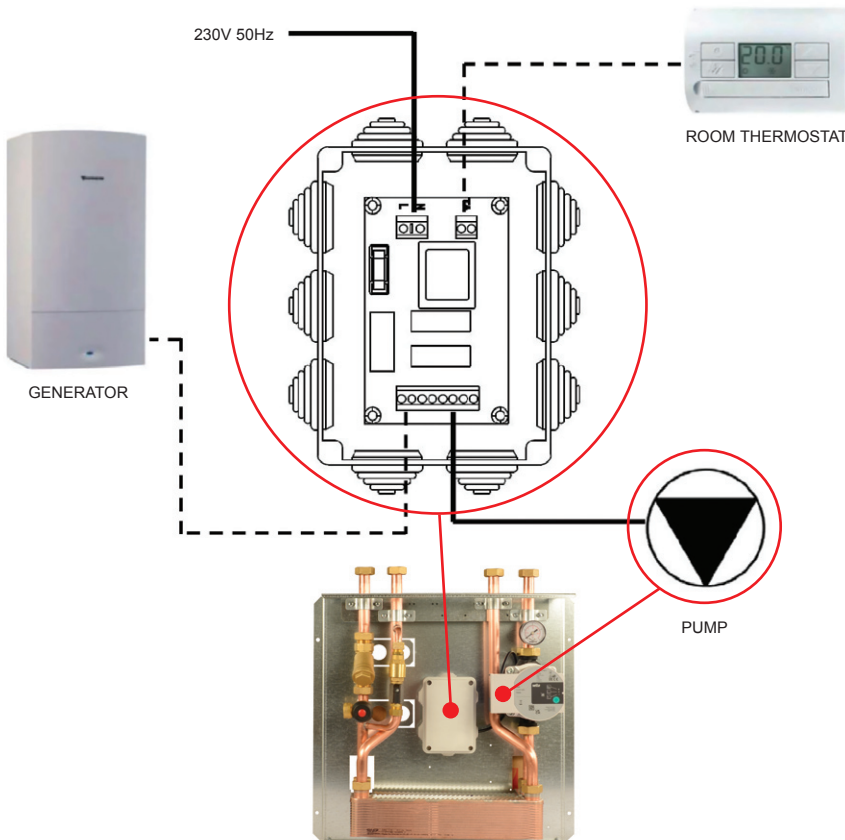
The installation is intended to be wall-mounted, in technical rooms. A cover shell is available as an optional (cod. CEK), white.



* insert suitable vents

ELECTRICAL CONNECTIONS WITH MANAGEMENT CONTROL BOX (optional)

The control unit (optional) allows a simple and quick electrical connection of the system as shown in the diagram:



- **Power supply:** 230V 50Hz
- **Room thermostat:** heating activation command; clean and voltage-free contacts.
- **Generator:** activation command; clean and voltage-free contacts.
- **Circulator:** activation - power supply.

When the room thermostat detects the need to activate the heating function, it sends the command to the control unit, which turns on the **Sep Kit** pump and sends the activation command to the heater.

Sep Kit


TECHNICAL FEATURES


GENERATOR PUMP	
Fluid type	water VDI 2035
Max temperature	90°C
Max pressure	3 bar
PLANT PUMP	
Fluid type	water VDI 2035
Max temperature	90°C
Max pressure	3 bar
MAIN COMPONENTS	
Plate heat exchanger	braze welded
System pump	15/7 - max 50W
Filter	brass Y-type
Safety valve	4 bar
PIPE-LINES	
Material	copper
Size	Ø18 mm
HYDRAULIC CONNECTIONS	
Material	brass
Size	G 3/4" with nut and flat stop
HYDRAULICS SUPPORT	
Material	galvanised sheet metal 12/10
USE	
Installation	indoor
Room temperature range	5 - 55 °C
Humidity range	25 - 85%
EMPTY WEIGHTS	
Sep Kit	8,5 kg

EXCHANGER FEATURES

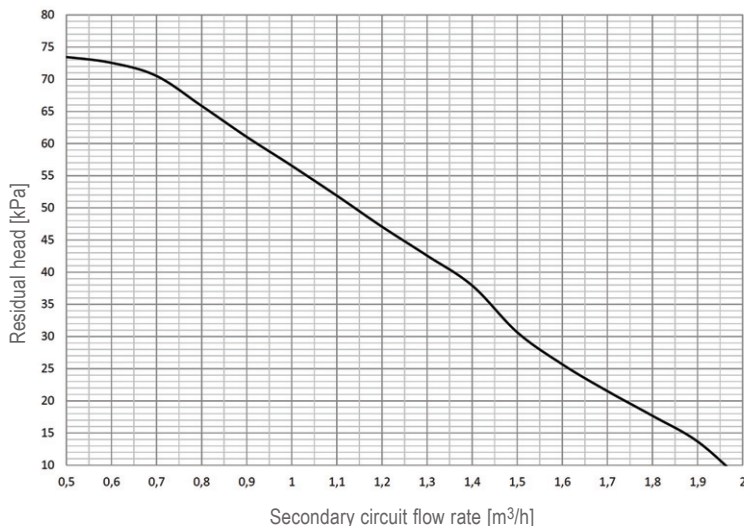
GENERATOR - HEAT PUMP	
Power	14 kW
PRIMARY PUMP - HEAT PUMP	
Flow rate	1.300 l/h
In / out temperature	45 / 36 °C
Hydraulic characteristic Kv	3,6 m³/h
SECONDARY PUMP - HEATING	
Flow rate	1.500 l/h
In / out temperature	32 / 40 °C
Hydraulic characteristic Kv	3,5 m³/h
GENERATOR - BOILER	
Power	26 kW
PRIMARY PUMP - BOILER	
Flow rate	1.500 l/h
In / out temperature	75 / 60 °C
Hydraulic characteristic Kv	3,6 m³/h
SECONDARY PUMP - HEATING	
Flow rate	1.150 l/h
Temperatura in / out	50 / 70 °C
Hydraulic characteristic Kv	3,5 m³/h

VERSIONS AND CODES

Version	Nominal capacity	Code
	14 kW - heat pump 26 kW - boiler	ESEP2614

Accessories	Description	Code
	Cover shell	CEK
Add at the bottom of the code		
	Manual interception valves with thermometer	V
	Control unit	S

MAXIMUM RESIDUAL HEAD SECONDARY PUMP - HEATING



Sep Kit

INSTALLATION WARNINGS

It is advisable to use flexible hydraulic connection in order to compensate for any thermal expansion and possible misalignment between the system connections.

CERTIFICATIONS

EC Machinery Directive

2006/42/CE.

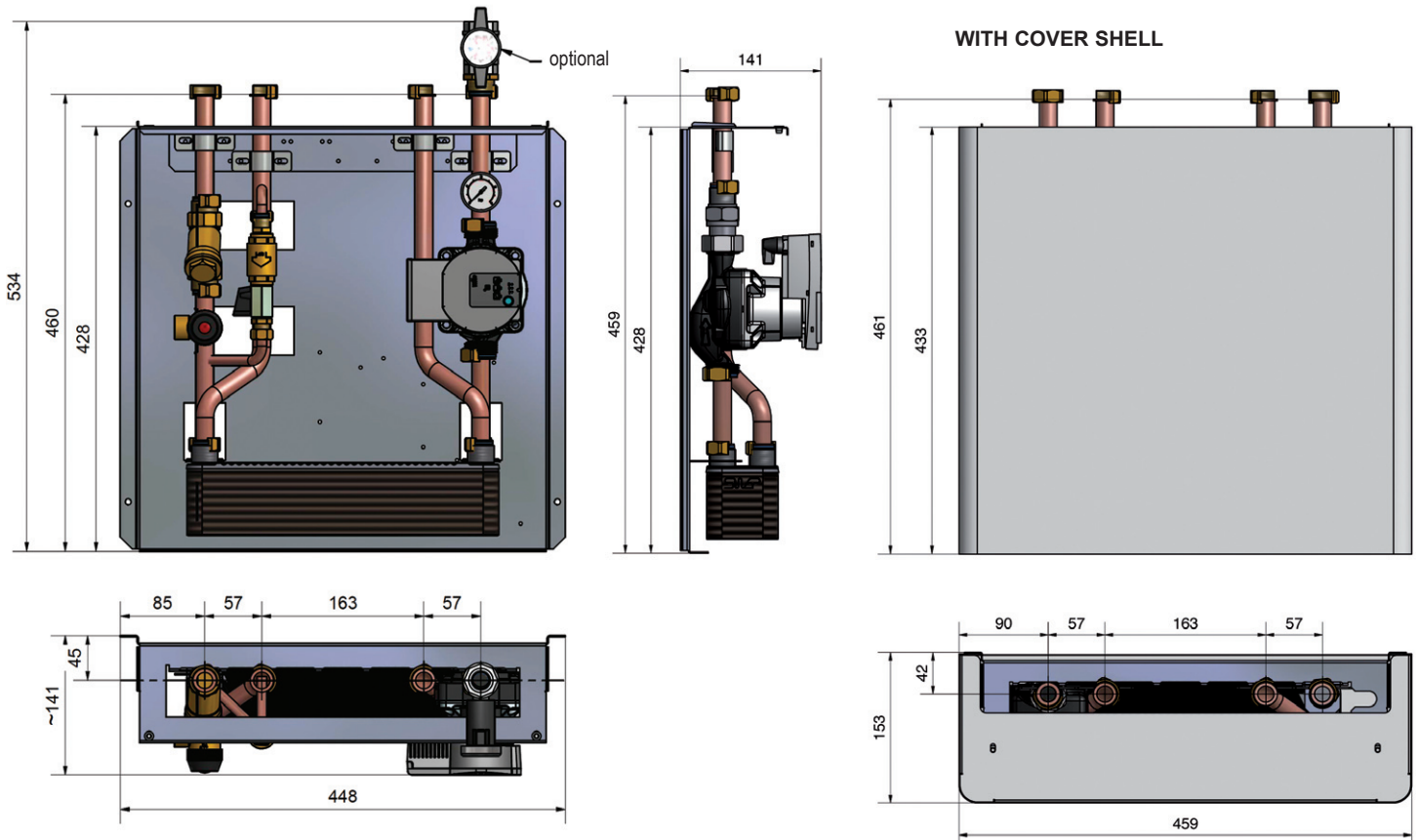
EC Low Voltage Directive

2014/35/ue: 26/04/2014

EC Electromagnetic Compatibility Directive

2014/30/UE

OVERALL SIZE



EXAMPLE OF SPECIFICATIONS

SEP KIT UNIT for hydraulic separation of generator and heating system by means of a plate heat exchanger; it can be combined with heat pumps up to 14 kW and boilers up to 26 kW. Wall hanging installation for technical room, complete with: • braze welded plate heat exchanger • 15/7 system pump • Y-strainer • 4 bar safety valve • filling unit • pressure gauge • control unit • manual shut-off ball valves with thermometer. Copper piping Ø18mm, max working pressure 6 bar, max temperature 90°C, hydraulic connections 3/4 "F, power supply 230V 50Hz, max power consumption 50W. Size (HxWxD): 534x448x141.

Brand: **COMPARATO**

Code: **ESEP2614VS**

COVER SHELL, powder-coated white RAL9010. Size (HxWxD): 433x459x153.

Brand: **COMPARATO**

Code: **CEK**

UPDATED DATA SHEETS AVAILABLE AT www.comparato.com

In order to provide an up-to-date service, Comparato Nello S.r.l. reserves the right to modify technical data, drawings, graphs and photos of this data sheet at any time, without prior notice.



HYDROTHERMAL SYSTEMS
COMPARATO NELLO s.r.l.

17014 CAIRO MONTENOTTE (SV) ITALIA VIALE DELLA LIBERTÀ • LOCALITÀ FERRANIA • Tel. +39 019 510.371 - FAX +39 019 517.102

www.comparato.com

e-mail: info@comparato.com



UNI EN ISO 9001:2015 CERTIFIED COMPANY