

ECOKAM T

Hydraulic interface unit
between solid fuel and gas boiler

DESCRIPTION

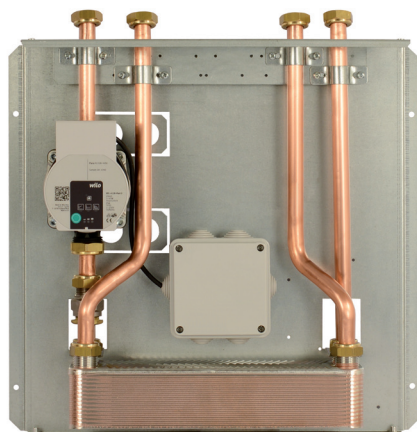
ECOKAM T modules are used in combined gas boiler and solid fuel boiler systems (thermo-fireplaces, cooking stoves, hydro-stoves, wood and/or pellet boilers) with open or closed surge chamber. Thanks to the hydraulic separation of the circuits, it is possible to not sum the powers of the two generators as per the indications of INAIL (ex ISPESL).

ECOKAM T modules separate the gas boiler circuit from the heating system circuit.

Hydraulic interface unit for the **HEATING** function

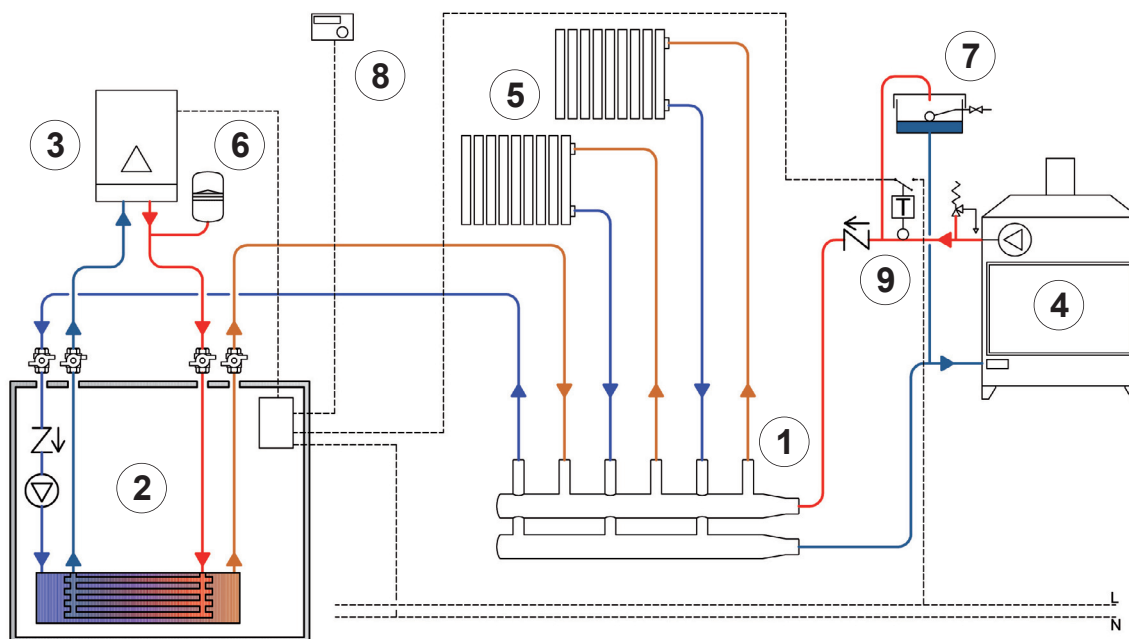
ECOKAM T

SHELL



- Hydraulic separation
- Automatic management of the gas boiler and the solid fuel boiler depending on the condition of the latter (if equipped with control system - accessory)
- Two outlet options: 24 kW and 35 kW (gas boiler power)

EXAMPLE OF USE



ECOKAM T

1. DIACOL MANIFOLD
2. ECOKAM T
3. GAS BOILER
4. SOLID FUEL BOILER
5. HEATING SYSTEM
6. CLOSED EXPANSION VESSEL
7. OPEN EXPANSION VESSEL
8. ROOM THERMOSTAT
9. CONTACT THERMOSTAT (INCLUDED IN THE CONTROL UNIT) - (accessory)

The diagram illustrates the experimental setup. It features a central gas meter with a red needle, connected to four vertical tubes labeled A, B, C, and D. Tubes A and B have blue triangular inlets, while tubes C and D have red triangular inlets. The tubes are connected to a common horizontal manifold at the top. The bottom of the tubes is connected to a series of horizontal tubes, likely representing the test bed or heat exchanger.

A diagram of a water heater installation. It shows a water heater tank (1) at the bottom. A gas control valve (2) is mounted on the side of the tank. A gas valve (3) is mounted on top of the tank. A vent pipe (4) is connected to the side of the tank and extends upwards. The diagram is labeled with numbers 1, 2, 3, and 4 in circles.

ELECTRICAL CONNECTIONS WITH CONTROL UNIT (accessory)

- * the adjustable contact thermostat must be connected to terminals C - NC as shown.



TECHNICAL FEATURES


HYDRAULIC CIRCUITS	
Fluid type	water VDI 2035
Max. Temperature	90°C
Max. Pressure	6 bar
PIPING	
Material	copper
Size	Ø18 mm
HYDRAULIC CONNECTIONS	
Material	brass
Size	G 3/4" female
HYDRAULIC SUPPORT	
Materiale	galvanised metal sheet 12/10
SHELL	
Material	galvanized metal sheet 10/10
Colour	RAL 9010
POWER SUPPLY	
Voltage	230V +/- 10%
Frequency	50 Hz
Maximum power consumption	55W
USAGE	
Installation	indoor environments
Room temperature range	5 - 55 °C
Humidity range	25 - 85%
EMPTY WEIGHTS	
Ecokam T	8 kg



EXCHANGERS CHARACTERISTICS

ECOKAM T • 24 kW	
Power	24 kW
PRIMARY CIRCUIT - GAS BOILER	
Flow rate	1.000 l/h
Temperature in / out	80 / 60 °C
SECONDARY CIRCUIT - HEATING	
Flow rate	1.000 l/h
Temperature in / out	50 / 70 °C
ECOKAM T • 35 kW	
Power	35 kW
PRIMARY CIRCUIT	
Flow rate	1.200 l/h
Temperature in / out	80 / 55 °C
SECONDARY CIRCUIT	
Flow rate	1.200 l/h
Temperature in / out	45 / 70 °C

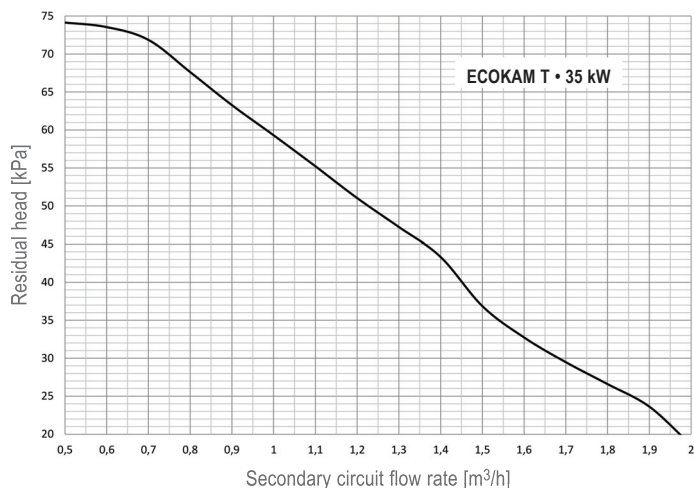
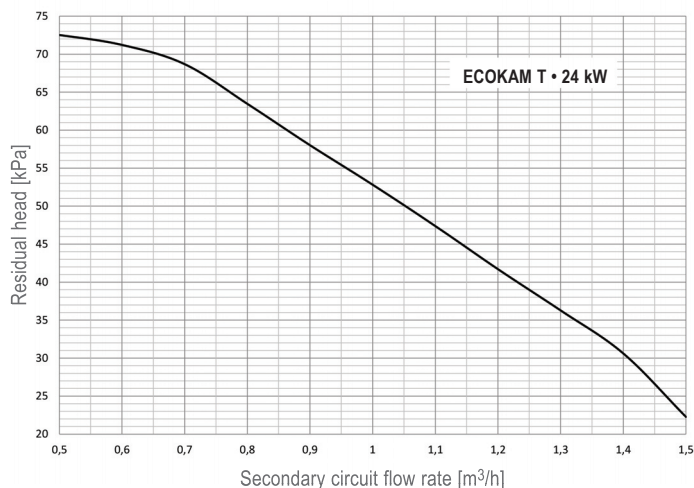
NOTE: CHOOSE THE ECOKAM T POWER ACCORDING TO THE GAS BOILER POWER

VERSIONS AND CODES

Version	Rated power	Code
	24 kW	ES1P24E
	35 kW	ES1P35E

Accessories	Description	Code
	White cover • Ecokam T	CEK
	Management unit	CEGE

SECONDARY CIRCUIT RESIDUAL HEAD

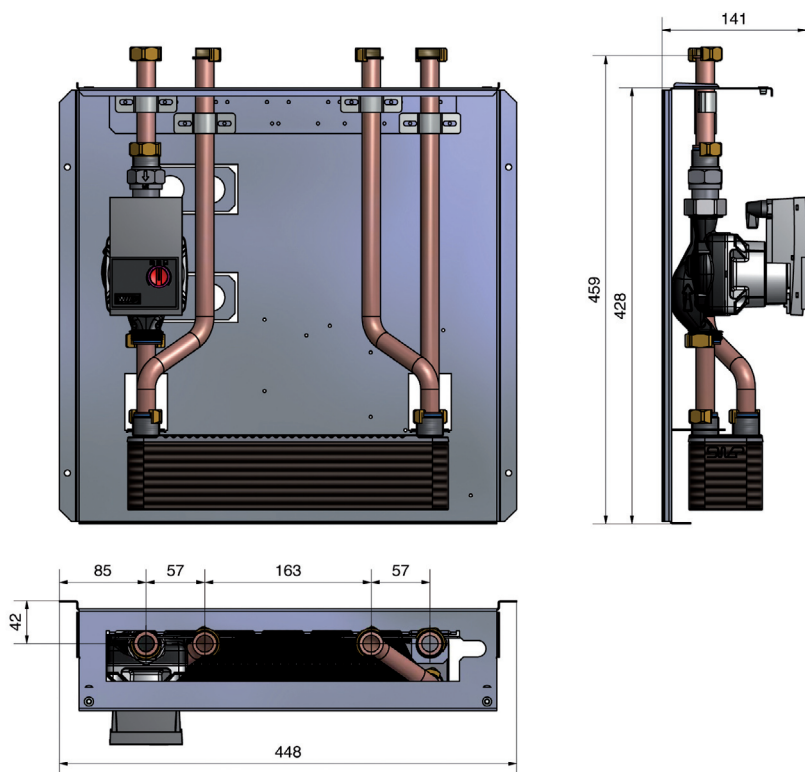


INSTALLATION WARNINGS

It is advisable to use hydraulic flexible connection in order to compensate for any thermal expansion and possible misalignment between the system connections.

OVERALL SIZE

WITHOUT SHELL



CERTIFICATIONS

CE Machinery Directive

2006/42/CE.

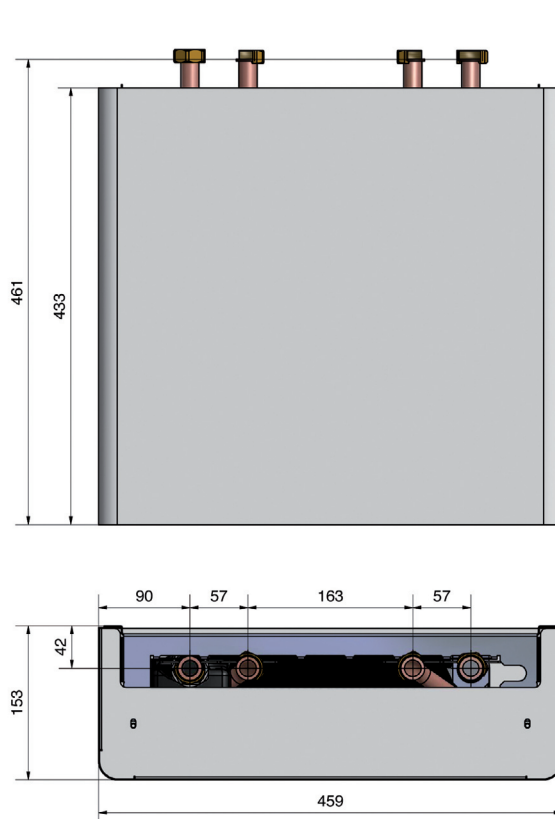
CE Low Voltage Directive

2014/35/ue: 26/04/2014

CE Electromagnetic Compatibility Directive

2014/30/UE

WITH SHELL



EXAMPLE OF SPECIFICATIONS

ECOKAM T HYDRAULIC INTERFACE UNIT for separating the gas boiler from the rest of the system with plated heat exchanger, nominal power 35 kW, ceiling-mounted installation for technical room, complete with: • braze-welded plated heat exchanger • system circuit pump • check valve. Copper pipes Ø18mm, maximum working pressure 6 bar, maximum temperature 90°C, hydraulic connections G3/4" with flat-contact nuts, electrical supply 230V 50Hz, maximum absorption 50W, dimensions 448x444x150mm.

Brand: **COMPARATO**

Code: **ES1P35E**

COVER SHELL, white powder-coated RAL9010.

Brand: **COMPARATO**

Code: **CEK**

UPDATED DATA SHEETS AVAILABLE AT www.comparato.com

In order to provide an up-to-date service, Comparato Nello S.r.l. reserves the right to modify technical data, drawings, graphs and photos of this data sheet at any time, without prior notice.



HYDROTHERMAL SYSTEMS
COMPARATO NELLO S.r.l.

17014 CAIRO MONTENOTTE (SV) ITALIA VIALE DELLA LIBERTÀ • LOCALITÀ FERRANIA • Tel. +39 019 510.371 - FAX +39 019 517.102

www.comparato.com

e-mail: info@comparato.com



UNI EN ISO 9001:2015 CERTIFIED COMPANY